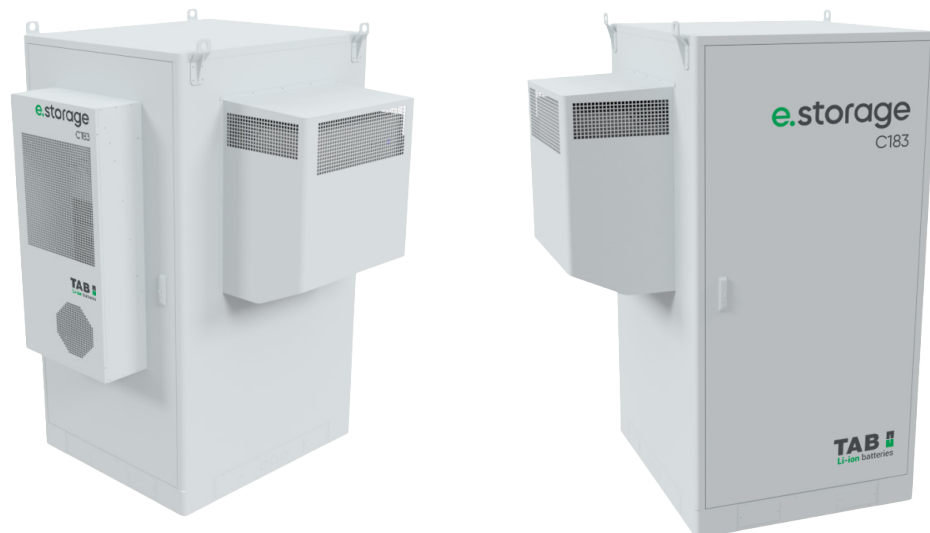


TAB e.storage C183



Specifications

Basic Parameters	C183
Nominal Voltage (Vdc)	921.6
Nominal Capacity (kWh)	183
Discharge Voltage (Vdc)	775
Charge Voltage (Vdc)	1040
Charge/Discharge Current (A)	140
Communication Port	CAN, RS485, TCP
Communication Protocol	Sunspec Modbus Compatible
Dimension (WxDxH, mm)	1577x1598x2350
Weight (kg)	2700
Ambient Temperature (°C)	-20 ~ 55
Altitude (m)	≤3000
IP Rating of Enclosure	IP55
Certificates	CE/IEC62619/IEC63056/IEC61000 ISO13849 - Performance level C