

# TAB MOTION MONOBLOCK BATTERIES



# TAB

TAB Motion Pasted  
TAB Motion Tubular  
TAB Motion AGM  
TAB Motion Gel

## TAB Motion Pasted

is a flooded small traction battery with positive pasted plates (expanded or gravity casted).

### ADVANTAGES:

- + excellent vibration resistance,
- + high rate discharge capability,
- + high performance in difficult working conditions,
- + economical and reliable ...

### APPLICATIONS:

- + wheelchairs,
- + truck applications,
- + caravans and motorhomes,
- + battery driven carts,
- + boats,
- + cleaning machines,
- + solar systems ...

### CHARGING:

- + The charging profile is Wa; WoWa, IUla; WUIa.



## TAB Motion Pasted

Number of cycles: 300 (IEC / EN 60254-1 / 25 °C)

TAB ID	Short code	C100 (Ah)	C20 (Ah)	C5 (Ah)	Box Type	Voltage (V)	LxWxH (mm)	BHD	Layout	PCS per Pallet (EUR/CNT)	Weight (kg)
1000782	50 P	70	60	50	L2	12	242x175x190	B13	0	63/90	16,6
1000783	60 P	80	75	60	L3	12	278x175x190	B13	0	51/80	19,2
1000784	85 P	115	105	85	L5	12	353x175x190	B13	0	36/60	24,6
1000769	80 P	115	105	80	59518	12	312x175x212	B0	0	42/70	23,3
1000761	105 P	125	120	105	60528	12	344x172x212/234	B0	0	36/48	26,5
1000766	110 P	155	140	110	62512	12	344x172x262/284	B0	0	24/36	31,8
1000763	110 P MAC	150	140	110	MAC 110	12	509x175x182/208	B0	3	24/40	34,3
1000764	150 P	190	180	150	B	12	512x223x194/221	B0	3	21/35	43,3
1000765	190 P	245	225	190	C	12	518x273x214/241	B0	3	18/24	56,1

All measures and weights are within standard production tolerances. Electrical values are approximate. Technical modifications are reserved without prior notice. Weight tolerance is ± 5 %.

## TAB Motion Tubular

is a flooded small traction battery with positive tubular plates.

### ADVANTAGES:

- + premium tubular plate construction with free electrolyte ensures long operating life,
- + high rate discharge capability,
- + for applications which are used in difficult working conditions,
- + reliable and durable - gives 1200 cycles performance ...

### APPLICATIONS:

- + golf carts,
- + cleaning machines,
- + wheelchairs,
- + mobile elevating work platforms,
- + electric elevating platform trucks,
- + solar system ...

### CHARGING:

- + The charging profile is Wa; WoWa, IUla; WUIa.



## TAB Motion Tubular

Number of cycles: 1200 (IEC / EN 60254-1 / 25 °C)

TAB ID	Short code	C100 (Ah)	C20 (Ah)	C5 (Ah)	Box Type	Voltage (V)	LxWxH (mm)	BHD	Layout	PCS per Pallet (EUR/CNT)	Weight (kg)
1000253	55 T	65	60	55	L3	12	278x175x190	B13	0	51/80	18,9
1000399	90 T	115	110	90	59518	12	303x175x208/229	B1	0	42/70	28,7
1000016	95 T	130	115	95	60528	12	344x172x212/234	B0	0	36/48	30,4
1000014	120 T	155	140	120	62512	12	344x172x262/284	B0	0	24/36	37,5
1000251	145 T	180	165	145	B	12	512x223x194/220	B0	3	21/35	47,5
1000417	Golf Cart T	240	220	180	Golf Cart	6	244x190x270/281	B0	0	36/48	31,5
1003148	Golf Cart TS	270	250	210	Golf Cart	6	244x190x270/281	B0	0	36/54	32,4

All measures and weights are within standard production tolerances. Electrical values are approximate. Technical modifications are reserved without prior notice. Weight tolerance is ± 5 %.

**TAB Motion AGM** is a VRLA (Valve Regulated Lead Acid) battery with positive pasted plates (gravity casted) produced in Absorption Glass Mat technology.

**ADVANTAGES:**

- + 30 % higher energy density in comparison with flooded battery,
- + very low selfdischarge rate,
- + no corrosive exhaust (applicable for food industry and pharmacy),
- + robust design, stroke and vibration resistant,
- + low charging factor (1,08) lowers energy consumption,
- + electrolyte is kept immobilized in AGM (prevents leakage if housing is broken),
- + maintenance free - install and forget,
- + high starting performance ...

**APPLICATIONS:**

- + caravans, mobile homes,
- + boats,
- + wheelchairs,
- + cleaning machines,
- + alarm systems,
- + UPS and PV systems ...

**CHARGING:**

- + IU charging characteristic:  $U_{ch} = 14,4 - 14,8 \text{ V}$ ,  $I_{ch \text{ max}} = 0,25 \times C20$
- + IUa charging characteristic with equalizing charge step 2:
  - 1)  $U_{ch} = 14,4 - 14,8 \text{ V}$ ;  $I_{ch \text{ max}} = 0,25 \times C20$
  - 2)  $I_a = 0,01 - 0,02 \times C20$ ;  $U_{max} = 15,8 \text{ V max 2 h}$
- + Continuous charging (standby):  $U = 13,5 - 13,8 \text{ V / bat at } 20^\circ\text{C}$ .



**TAB Motion AGM**

Number of cycles: 400 (IEC / EN 60254-1 / 25 °C)

TAB ID	Short code	C100 (Ah)	C20 (Ah)	C5 (Ah)	Box Type	Voltage (V)	LxWxH (mm)	BHD	Layout	PCS per Pallet (EUR/CNT)	Weight (kg)
1000569	45 AGM	65	60	45	L2	12	242x175x190	B13	0	63/90	17,9
1000570	55 AGM	75	70	55	L3	12	278x175x190	B13	0	51/80	20,5
1000572	60 AGM	85	80	60	L4	12	315x175x190	B13	0	42/60	23,2
1000574	70 AGM	100	95	70	L5	12	353x175x190	B13	0	36/60	26,0
1000577	90 AGM	115	105	90	L6	12	394x175x190	B13	0	36/60	29,2

All measures and weights are within standard production tolerances. Electrical values are approximate. Technical modifications are reserved without prior notice. Weight tolerance is ± 5 %.

**TAB Motion Gel** is a VRLA (Valve Regulated Lead Acid) battery with positive pasted plates (gravity casted) with electrolyte in the form of Gel. Casing is made of reinforced PP material. All this makes the battery reliable, maintenance-free all-rounder.

**ADVANTAGES:**

- + completely maintenance free - install and forget,
- + electrolyte is kept immobilized in Gel (prevents stratification of electrolyte, protected against spilling),
- + self-discharge less than 2 % a month which means less difficulties during transport and storage, depends on temperature,
- + no corrosive exhaust (applicable for food industry and pharmacy),
- + robust design, stroke and vibration resistant ...

**APPLICATIONS:**

- + caravans and mobile homes,
- + boats,
- + cleaning machines,
- + electrical vehicles,
- + solar systems,
- + UPS systems ...

**CHARGING:**

- + Chargers with IUUa and IUa charging characteristic
- + Cyclic application (2,30 – 2,35)V/Cell, maximum current  $I_c = 30\% C5$  (e.g.  $C5 = 105\text{Ah}$ ,  $I_c = 31,5\text{A}$ ),
- + Equalising charge 2,70V/Cell,  $t \leq 4\text{h}$ , maximum current  $I_e = 10\% I_c$  (e.g.  $I_c = 31,5\text{Ah}$ ,  $I_e = 3,15\text{A}$ ),
- + Stationary application (2,25 – 2,30)V/Cell, maximum current  $I_c = 30\% C5$  (e.g.  $C5 = 105\text{Ah}$ ,  $I_c = 31,5\text{A}$ ),
- + Charging voltages are given at room temperature, otherwise temperature compensation 5mV/°C for Cell.



**TAB Motion Gel**

Number of cycles: 700 (IEC 60254-1)

TAB ID	Short code	C100 (Ah)	C20 (Ah)	C5 (Ah)	Box Type	Voltage (V)	LxWxH (mm)	BHD	Layout	PCS per Pallet (EUR/CNT)	Weight (kg)
1000807	50 Gel	70	60	50	L3	12	278x175x190	B13	0	51/80	21,3
1000808	70 Gel	90	80	70	L5	12	353x175x190	B13	0	36/60	25,8
1029094	75 Gel	100	85	75	60528	12	352x175x211/232	B1	1	36/48	28,4
1000810	105 Gel	140	125	105	62512	12	342x169x265/286	B0	0	24/36	37,9
1000811	130 Gel	165	150	130	B	12	513x223x194/216	B0	3	21/35	50,5
1000813	180 Gel	235	210	180	C	12	518x273x214/235	B0	3	18/24	68,3
1000812	180 Golf Cart Gel	235	210	180	Golf Cart	6	244x190x255/276	B0	0	36/48	30,0

All measures and weights are within standard production tolerances. Electrical values are approximate. Technical modifications are reserved without prior notice. Weight tolerance is ± 5 %.

**TAB Motion in flooded and VRLA technology** is a range of block batteries for all applications in small traction and leisure segment.

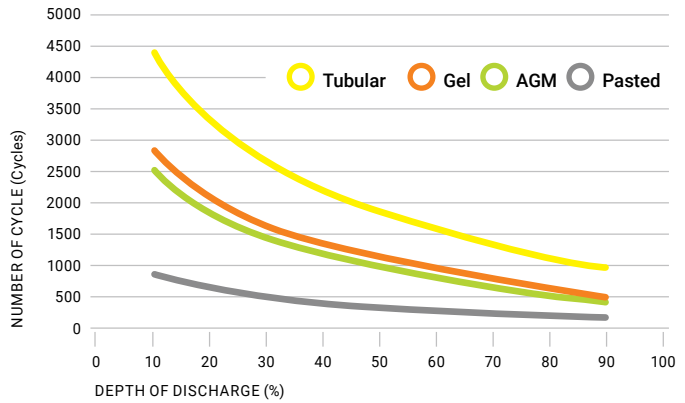
**TAB Motion Pasted** and **TAB Motion Tubular** are flooded batteries while **TAB Motion AGM** and **TAB Motion Gel** are gas recombination batteries. Both ranges have highest cyclic durability.

**OPERATION:**

To achieve optimal operating life avoid deep discharges. Never leave battery in a discharged state. Electrolyte level for flooded batteries has to be checked regularly and then filled with demineralized water.

The single point automatic watering system can be considered on some types. Valve regulated batteries with absorbed electrolyte (AGM) or gel electrolyte are sealed for life and need no watering.

**DoD - Number of Cycles**



V24-08-2024-EN (atelj@k®)

**BOX TYPE**

(L×W×H)

**L2**  
242×175×190



**L3**  
278×175×190



**L3 Gel**  
278×175×190



**L4**  
315×175×190



**L5**  
353×175×190



**L5 Gel**  
353×175×190



**59518 (80P)**  
312×175×212



**60528**  
344×172×212/234



**60528 Gel**  
352×175×211/232



**62512**  
344×172×262/284



**62512 Gel**  
342×169×265/286



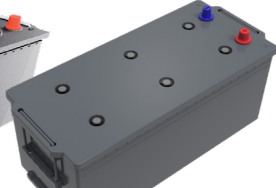
**MAC 110**  
509×175×182/208



**B**  
512×223×194/221



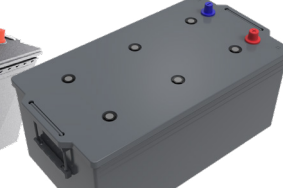
**B Gel**  
513×223×194/216



**C**  
518×273×214/241



**C Gel**  
518×273×214/235



**Golf Cart**  
244×190×270/281

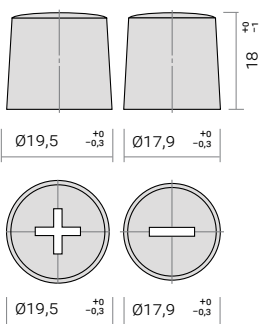


**Golf Cart Gel**  
244×190×255/276

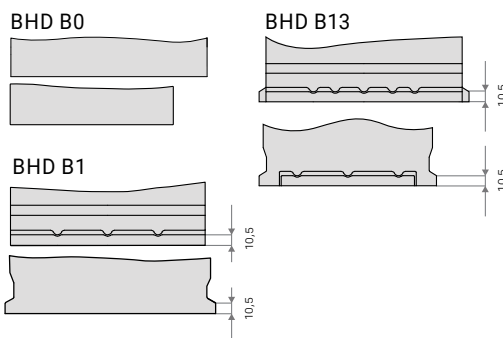


**TERMINALS**

Terminal 1



**BASE HOLD DOWN**



**LAYOUT**

