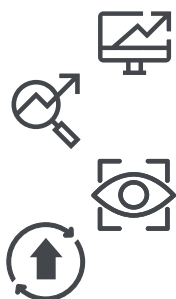


BATTERY MANAGEMENT IOT CLOUD SERVICE APPLICATION FOR PERFORMANCE IMPROVEMENT AND LONGER SERVICE LIFE OF THE BATTERY.

TAB IOT CLOUD SOLUTIONS



ADVANTAGES FOR USERS

- **MONITORING AND DIAGNOSTICS:** Cloud web application for real time remote monitoring of the battery conditions via GSM/Lte/Wi-Fi.
- **PROGNOSTICS:** Predictive diagnostics early detection of error and failures.
- **FAULT DETECTION AND PREDICTION:** Higher vehicle availability due to fewer unplanned breakdowns.
- **EVALUATION AND OPTIMIZATION:** Higher vehicle availability due to optimized charging times

BATTERY USAGE REPORT

- Report for selected interval (Energy flow / in and out of battery)
- Number of cycles
- Battery time in each status
- Graphical overview of energy flow for each day
- Battery status overview for each day
- Export to Excel



MAIN FEATURES

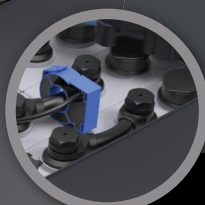
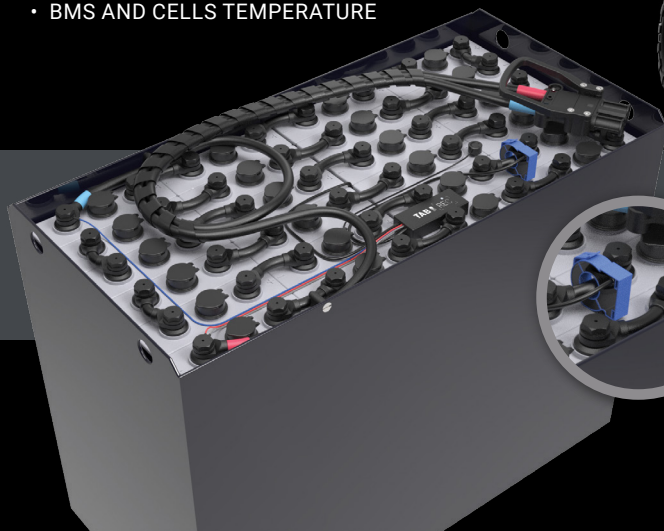
- Online Service for remote battery monitoring
- Remote connection over GSM/LTE with worldwide cover
- Adapted for traction/motive power batteries
- Local data logging (offline data logging)
- Can be used for Li-ion and Lead-Acid batteries

USE CASES

- **SERVICE DEPARTMENT**
- **PLANING**
- **NEW BUSINESS MODELS**
Battery rentals, energy sales and extended warranty

TAB IOT MONITOR BATTERY FUNCTIONALITY OVERVIEW

- BATTERY STATUS
- CHARGED AND DISCHARGED BATTERY (ENERGY IN / ENERGY OUT)
- SOC MONITORING
- VOLTAGE MONITORING
- AVERAGE CURRENT AND SET INTERVAL, MAX AND MIN PEAK CURRENT
- BMS AND CELLS TEMPERATURE



V1-03-23

Energy in motion